

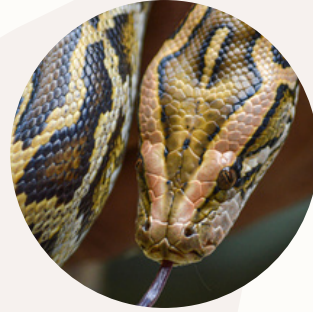
WHAT'S FOR DINNER?

DRAW ARROWS TO COMPLETE THE FOOD WEB FOR SOUTH AMERICA. REMEMBER, THE ARROWS ARE SHOWING TRANSFER OF ENERGY, NOT WHO EATS WHO.

JAGUAR/CARNIVORE



BOA CONSTRICTOR/CARNIVORE



SLOTH/HERBIVORE



MACAW/HERBIVORE



SQUIRREL MONKEY/OMNIVORE



BLUEBERRIES/PRODUCER



TOUCAN/OMNIVORE



GRASSHOPPER/HERBIVORE



ANSWER KEY



- WHY ARE THE BLUEBERRIES IN THE FOOD WEB CALLED PRODUCERS?
- THE ARROW IS POINTING FROM THE BLUEBERRIES TO THE SPIDER MONKEY. DOES THAT MEAN THE BLUEBERRIES EAT THE SPIDER MONKEY???
- WHAT DO YOU THINK WOULD HAPPEN IF THE MACAWS WENT EXTINCT?
- WHY IS THE TOUCAN IN THE FOOD WEB CALLED A CONSUMER AND NOT A PRODUCER?
- IF THE GRASSHOPPER IS CONSIDERED A PRIMARY CONSUMER, WHAT WOULD THE SPIDER MONKEY BE?
- CAN YOU CREATE AN ENERGY PYRAMID WITH THIS FOOD WEB?