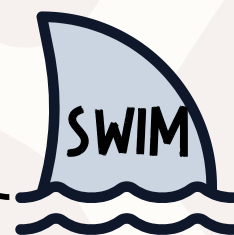
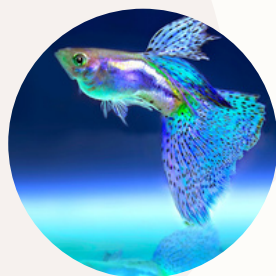
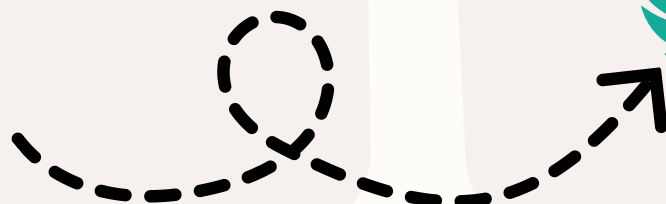


HOW DO THESE ANIMALS MOVE?

Trace the dotted lines to see how these animals move!



ANIMALS AND THE 5 SENSES

GUESS WHAT SENSE THE ANIMAL IS DESCRIBING. THEN, TRACE THE DOTTED LETTERS TO SEE IF YOU'RE RIGHT!



**I have really big eyes
to see at night.**

Sight



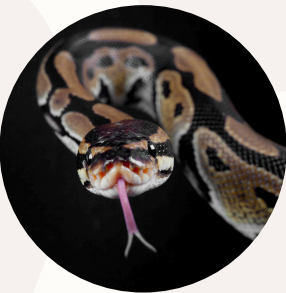
**I can't see very well so
I use my long nose to
sniff out ants to eat.**

Smell



**I'm a picky eater. If I
don't like something, I
spit it out!**

Taste



**I can't see very well and
I don't have ears. I feel
vibrations on the ground
to help find my food.**

Touch



**I use my ears to help
track down my prey.**

Sound

WHAT'S MY HABITAT?

Draw a line to the habitat the animal belongs in.



ANSWER KEY



- What is a habitat?
- Can you tell me how you chose your answers?
- How do we know a polar bear doesn't live in the desert?

All of the things you listed about the polar bear are called adaptations. Polar bears have adaptations for cold places like their habitat in the Arctic. What adaptations does a snake have that let me know that it doesn't belong in the Arctic?

FOOD CHAINS: IT'S ALL ABOUT ENERGY

Use the pictures and descriptions below to fill in the food web at the bottom for this North American habitat.



Consumer: This garter snake consumes other animals to get its energy.



Primary Consumer: The grasshopper is a herbivore that consumes producers and is also eaten by higher level consumers.



The sun creates a lot of energy and gives some of it to plants for animals to eat.



Producer: plants like grass produce their own food with energy from the sun.



Consumer: This hawk is a carnivore. He gets his energy from eating meat. Do you think any of these animals could eat him?



Consumer: This American Bullfrog is an insectivore and gets its energy from insects.



ANSWER KEY



The sun isn't always listed on a food chain, but it is where all of the energy comes from that travels down the chain.



Plants produce their own food with energy from the sun. Think about the produce section of the grocery store.



The animal in any food chain that is an herbivore is called a primary consumer. This level gets the most energy of any consumers because they don't have to hunt down their food.



The bullfrog would be a secondary consumer because they eat the insects that eat the plants. Secondary consumers can be omnivores, but they must consume other animals.



The snake would be a tertiary consumer because it eats the secondary consumer. These animals are typically carnivores.



The hawk in this chain would be a quaternary consumer or apex predator. Only 10% of the energy is passed down the chain. Then the prey and predator expend energy so these predators only receive about .01% of the energy that started the chain.



- Why do the arrows go that way? Does that mean the sun eats the grass?
- Have you ever seen a chubby cheetah? Why do you think that is?
- Can you explain this food chain in your own words?
- What do you think would happen if we removed _____ from this food chain?
- How much energy would the grasshopper receive in this food chain? (10%)
- Can you make a food chain with the animals you saw at the zoo?

PHYSICAL OR BEHAVIORAL?

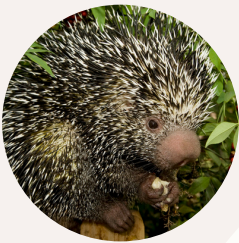
Read the description and see if you think the adaptation is physical (something the animal has) or behavioral (something the animal does).



I have patterns on my feathers that allow me to blend in really well to trees.



I will play dead and release a nasty smell so that predators don't want to eat me.



I have a big nose so I can smell my food because my eyesight isn't great.



I have long pointed claws to dig in the dirt for insects.



I migrate south during the winter to avoid the cold.



I like to hunt at night to keep from getting too hot and to sneak up on my prey better.

ANSWER KEY



I have patterns on my feathers that allow me to blend in really well to trees.

Physical



I will play dead and release a nasty smell so that predators don't want to eat me.

Behavioral



I have a big nose so I can smell my food because my eyesight isn't great.

Physical



I have long pointed claws to dig in the dirt for insects.

Physical



I migrate south during the winter to avoid the cold.

Behavioral



I like to hunt at night to keep from getting too hot and to sneak up on my prey better.

Behavioral

- The armadillos claws are physical, but what would the digging part be?
- Think of an animal and name one physical and one behavioral adaptation.
- What are some physical and behavioral adaptations you have?
- Can physical adaptations be taught? What about behavioral?

WHAT'S FOR DINNER?

Draw arrows to complete the food web for South America. Remember, the arrows are showing transfer of energy, not who eats who.

Jaguar/Carnivore



Boa Constrictor/Carnivore



Sloth/Herbivore



Macaw/Herbivore



Squirrel Monkey/Omnivore



Blueberries/Producer



Toucan/Omnivore



Grasshopper/Herbivore



ANSWER KEY



- Why are the blueberries in the food web called producers?
- The arrow is pointing from the blueberries to the spider monkey. Does that mean the blueberries eat the spider monkey???
- What do you think would happen if the macaws went extinct?
- Why is the toucan in the food web called a consumer and not a producer?
- If the grasshopper is considered a primary consumer, what would the spider monkey be?
- Can you create an energy pyramid with this food web?

INNATE OR LEARNED?

Read the card and decide if the behavior is innate or learned.

geese flying south for winter



spiders spinning webs



birds laying eggs



chimpanzees using sticks to get termites



gorillas using sign language to communicate



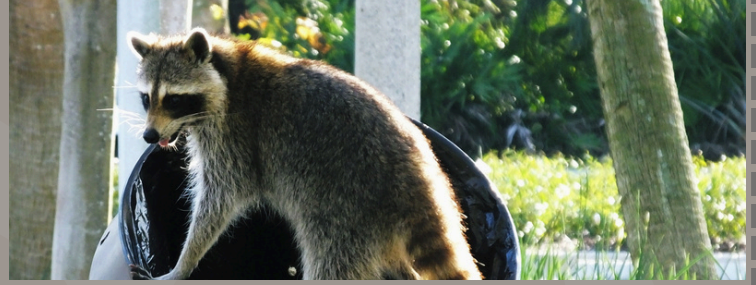
chameleons changing colors



dogs following commands



raccoons opening trash cans



octopus opening a jar to get food



salmon swimming upstream to spawn



dolphins teaching hunting strategies



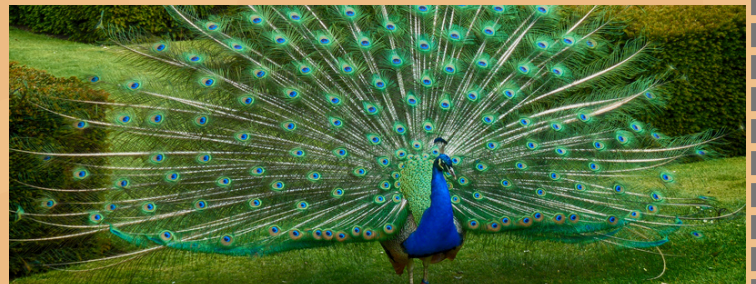
sea turtles hatchlings moving toward the ocean



ravens learning to mimic



peacocks spreading feathers



ANSWER KEY

- geese flying south for the winter - innate
 - spiders spinning webs - innate
 - birds laying eggs - innate
 - chimpanzee using sticks to get termites - learned
 - gorillas using sign language to communicate - learned
 - chameleons changing colors - innate
 - dogs following commands - learned
 - racoons opening trash cans - learned
 - octopus opening a jar to get food - learned
 - salmon swimming upstream to spawn - innate
 - dolphins teaching hunting strategies - learned
 - sea turtle hatchlings moving toward the ocean - innate
 - ravens learning to mimic - learned
 - peacock spreading feathers - innate
-
- What are some human behaviors that are innate?
 - What are some human behaviors that are learned?
 - How do you think animals learn behaviors if there isn't anyone to teach them?
 - What behaviors would you want to teach an animal?
 - What behaviors would you want to learn from animals?
 - How do you think human teach animals different behaviors?
 - <https://kera.pbslearningmedia.org/resource/animal-training-video/young-explorers/>
 - <https://www.youtube.com/watch?v=5A2Uw1lapaQ>
 - <https://www.youtube.com/watch?v=kcqBrJgAfn0>

FIELD TRIP SCAVENGER HUNT

CHECK THE BOX IF YOU FIND THE ANIMAL AROUND THE ZOO!

☐

BROWN
PELICAN

☐

GIRAFFE

☐

AMERICAN
ALLIGATOR

☐

GABOON
VIPER

☐

JAGUAR

☐

AXOLOTL

☐

BLUE & GOLD
MACAW

☐

SLOTH

☐

BALD EAGLE

☐

PANTHER
CHAMELEON

☐

3 BANDED
ARMADILLO

☐

GIANT
ANTEATER

☐

KEEL-BILLED
TOUCAN

☐

BISON



HOW MANY ITEMS CAN YOU FIND?
WRITE THE NUMBER IN THE BOX!

SCAVENGER HUNT

Can you solve the riddle and find the animal in the zoo?

Deep in the shadows where the cold-blooded creep, we are a pair of sisters with nothing to hide. We have traded our jungle camouflage for the colors of winter snow, but still give hugs “to die for”. Who are we?

I am a ghost of the Great Plains that was once thought to be extinct. I wear a black mask like a bandit, black socks on my feet, and a black tip on my tail. While you might see my neighbors in the backyard during the day, I am a creature of the night who loves to hide in the burrows of prairie dogs. Can you find the realest 'BFF' in the zoo?

I am the undisputed ruler of the Amazon and the largest of my kind in the Western Hemisphere. I am a master of both land and water, and I can crush a turtle's shell with just one bite. Look for the 'smiling' pattern on my forehead—that's how you'll know it's me!

I am a master of the slow-motion hunt, hiding in plain sight within the trees of Madagascar. I wear a living mood ring for skin, shifting through a rainbow of reds, blues, and greens. My feet are shaped like tongs to grip the thinnest branches, and my 'radar' eyes scan the world in two directions at once. Can you find the 'Panther' that never roars?

I have a heart the size of a basketball that must fight a constant war against gravity. My neck is as long as a hallway, but has the same number of vertebrae that you do. I can pluck leaves from the sharpest of thorns without drawing blood. Find the creature with the 20 inch purple reach.

ANSWER KEY

Deep in the shadows where the cold-blooded creep, find a pair of sisters with nothing to hide. We have traded our jungle camouflage for the colors of winter snow. We are serpents that lack the “ink” of nature, but give hugs “to die for”. Who are we?

Burmese Pythons (Reptile House)

I am a ghost of the Great Plains that was once thought to be extinct. I wear a black mask like a bandit, black socks on my feet, and a black tip on my tail. While you might see my neighbors in the backyard during the day, I am a creature of the night who loves to hide in the burrows of prairie dogs. Can you find the realest 'BFF' in the zoo?

Black Footed Ferret (Elm Creek Backyard Building)

I am the undisputed ruler of the Amazon and the largest cat in the Western Hemisphere. I am a master of both land and water, and I can crush a turtle's shell with just one bite. Look for the 'smiling' pattern on my forehead—that's how you'll know it's me!

Jaguar (South America)

I am a master of the slow-motion hunt, hiding in plain sight within the trees of Madagascar. I wear a living mood ring for skin, shifting through a rainbow of reds, blues, and greens. My feet are shaped like tongs to grip the thinnest branches, and my 'radar' eyes scan the world in two directions at once. Can you find the 'Panther' that never roars?

Panther Chameleon (Madagascar Building)

I have a heart the size of a basketball that must fight a constant war against gravity. My neck is as long as a hallway, but has the same number of vertebrae that you do. I can pluck leaves from the sharpest of thorns without drawing blood. Find the creature with the 20 inch purple reach.

Giraffe (Africa)