

ANIMALS AND THE 5 SENSES

GUESS WHAT SENSE THE ANIMAL IS DESCRIBING. THEN, TRACE THE DOTTED LETTERS TO SEE IF YOU'RE RIGHT!



**I have really big eyes
to see at night.**

Sight



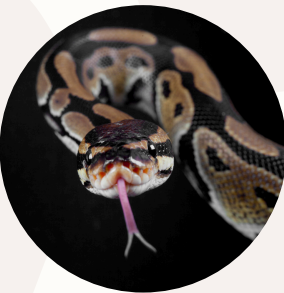
**I can't see very well so
I use my long nose to
sniff out ants to eat.**

Smell



**I'm a picky eater. If I
don't like something, I
spit it out!**

Taste



**I can't see very well and
I don't have ears. I feel
vibrations on the ground
to help find my food.**

Touch



**I use my ears to help
track down my prey.**

Sound